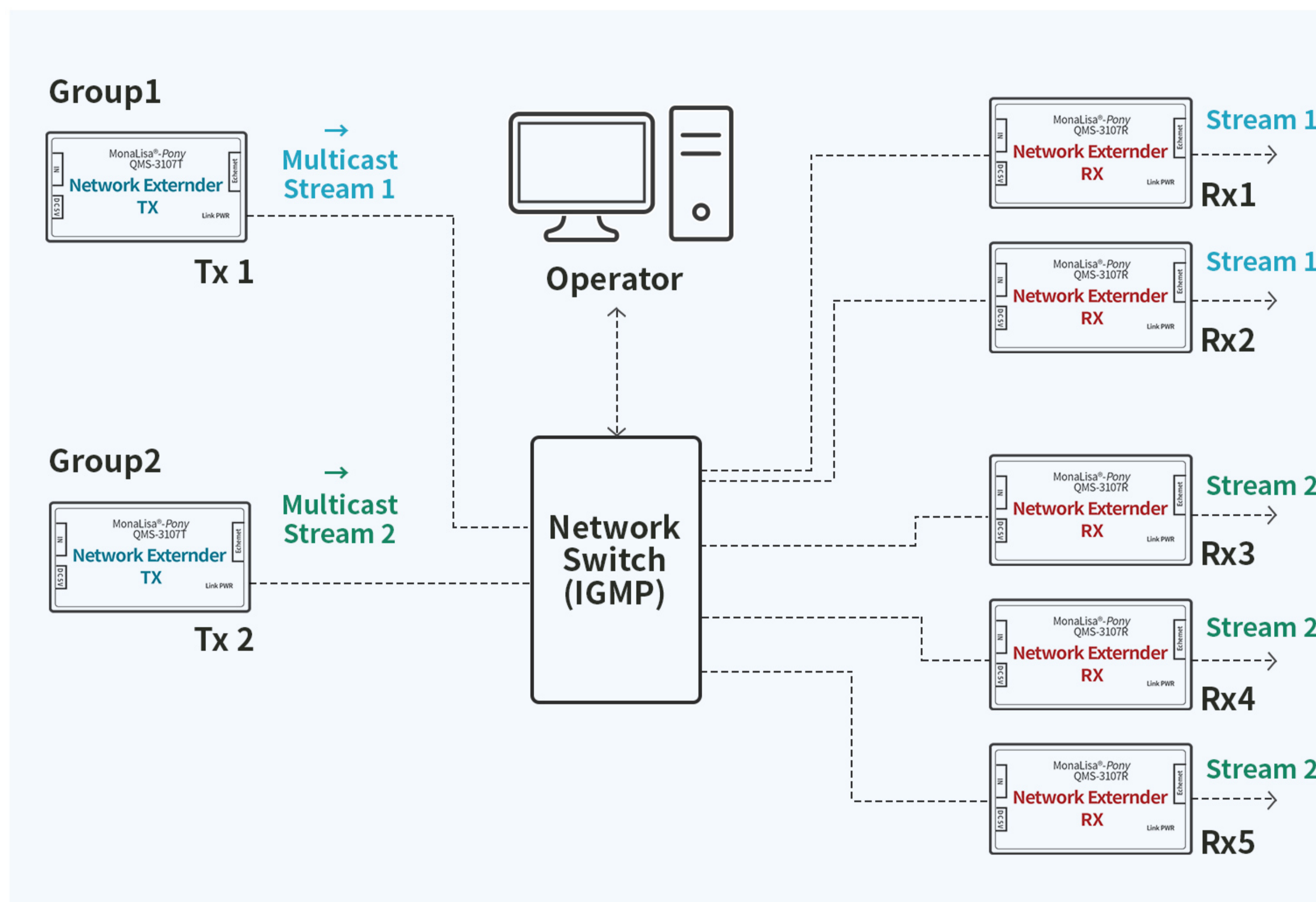


VIDEO CONNECTION MANAGER

‘Mango’: Video/Audio Connection Management Program

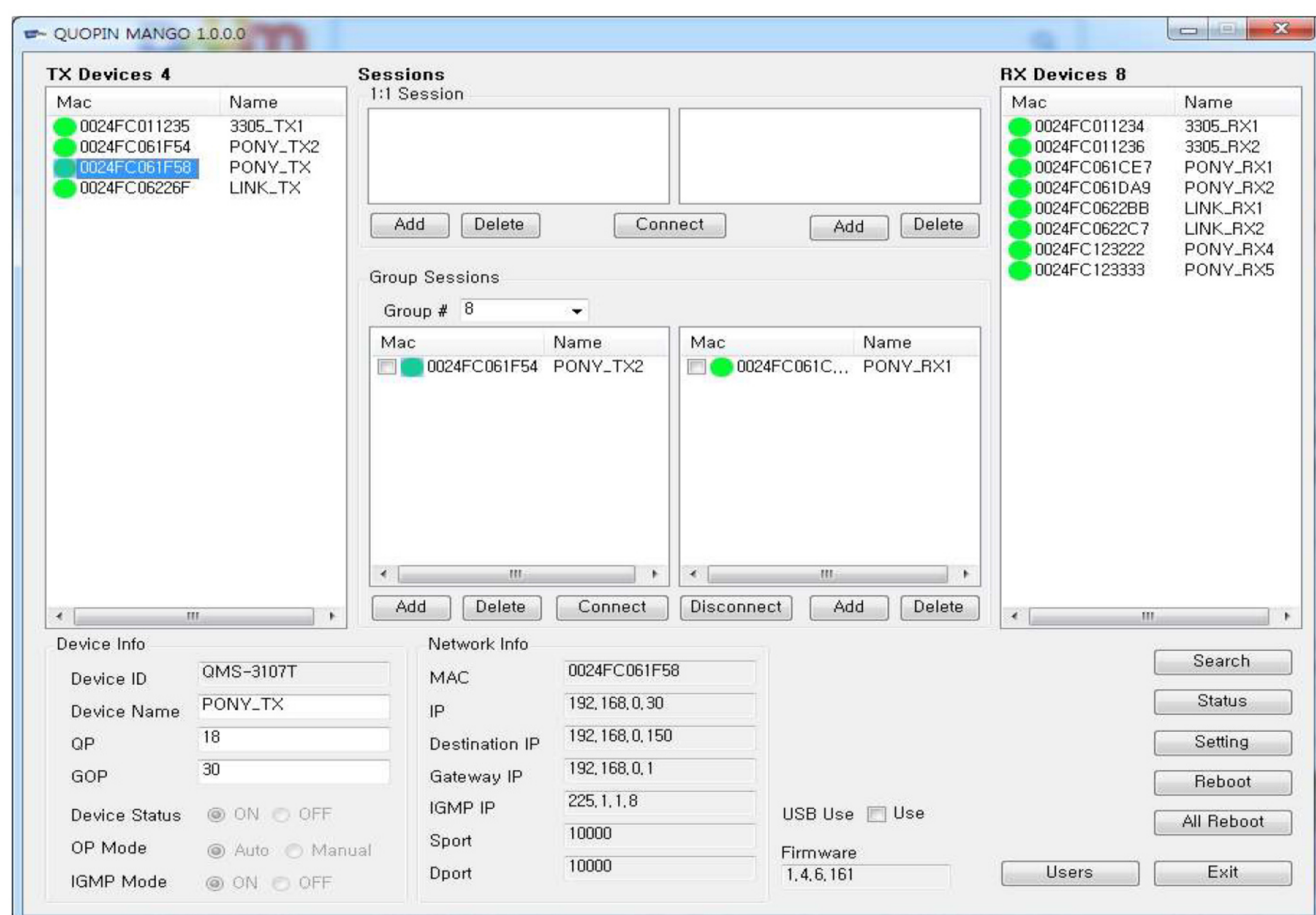
Mango is the operator-friendly management program with easy-to-use GUI for connecting video sources (camera, PC, NVR, and STB) to display devices (monitors, TVs). It leads video sources to where the operator likes to send them. It works with QuoPin’s multimedia transmission devices – MonaLisa®-PONY/POLI. It configures 1-to-1, 1-to-many, and/or M-to-N connection among the network-connected MonaLisa devices.

All - IP Video / Audio Networking via MonaLisa® Products



Operation

- Drag & drop GUI
- IP/MAC addressbased connection
- Connection over LAN – PONY
- Connection over WAN – POLI, POLI-2
- 1-to-1 connection
- Group connection 1-to-N, M-to-N



Mango Features

1. Device detection & status monitoring
2. Bitrate control:
3. Configuration
 - IP address assignment
 - Video parameter setting: QP, GOP
 - Audio, USB transmission